

Connectors



The connectors and insulating sleeves provided by British Pacific are the type provided by Lucas on their wiring harnesses. They are not the common crimp-style found at most hardware stores.

Ring Connectors

Up to 28 strand wire, 3/16" stud size	BW252
44 and larger strand, 3/16" stud size	BW256

Fork Terminal

Up to 44 strand wire	BW262
----------------------	-------

Spade terminals, 3/16" wide spade

Female, up to 28 strand	BW206
Insulating sleeve	BW207
Female, 90 degree crimp, up to 28 strand	BW208
Insulating sleeve	BW209
Male, up to 28 strand	BW210
Insulating sleeve	BW207

Spade terminals, 1/4" wide spade

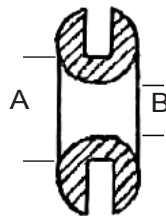
Female, 14 strand	BW221
Insulating sleeve	BW222
Female, up to 28 strands	BW223
Insulating sleeve	BW222
Female, up to 65 strands	BW224
Insulating sleeve	BW225
Female, 90 degree crimp, up to 28 strand	BW232
Insulating sleeve	BW233

Spade Terminals, 3/8" wide spade

Female, up to 65 strands	BW241
Insulating sleeve	BW242

Rubber Grommets

Protect wires passing through sheet metal



"A" is the diameter of the hole in the sheet metal and not the diameter of the grommet.

"B" is the diameter of the grommet hole.

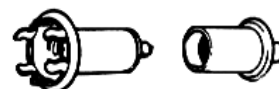
A	B	Part #
1/2"	1/4"	BW551
3/4"	1/2"	BW552
1"	3/4"	BW553
1-1/4"	1"	BW554
1-1/2"	1-1/4"	BW555

Blanking Plugs

Plug those old unused fire wall holes to keep drafts and fumes out

Hole diameter	Part #
1/4"	BW541
5/16"	BW542
3/8"	BW543
1/2"	BW544

Instrument Lamp Sockets



Panel Lamp holder	BW611
Ignition lamp holder	BW612
1/2" tube lamp holder	BW613

Flasher Units

Series II, IIA, (screw on terminals)	SFB100
Series IIA, (push on spade terminals)	502096
Series III	RTC3562
Hazard flasher, Series IIA, III	RTC3244

