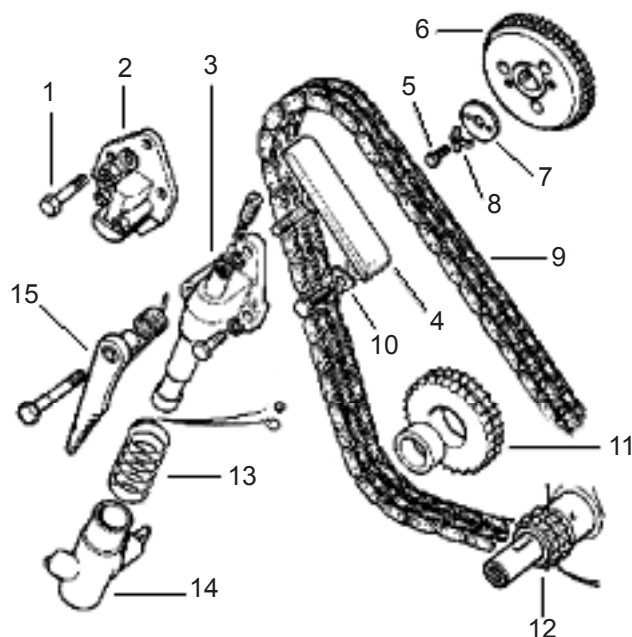


Timing Components



- | | |
|---|-----------|
| 1 Bolt, for new style tensioner (2 req) | SH605061L |
| 2 Chain tensioner, new style | ETC5190 |
| 3 Piston, tensioner, old style | 90515323 |
| 4 Pad (damper) | 275234 |
| 5 Bolt | ETC4141 |
| 6 Gear, cam shaft | ETC5551 |
| 7 Washer | ETC4140 |
| 8 Lock tab for bolt | 9210 |
| 9 Timing chain, new style | ETC5191 |
| Timing chain, old style | ETC4499 |
| 10 Lock tab for pad | 557523 |
| 11 Gear, idler | 236067 |
| 12 Gear, crank | 568333 |
| Crank gear key | 235770 |
| 13 Spring, tension (old style) | 233326 |
| 14 Tension cylinder (old style) | 277388 |
| 15 Ratchet, tensioner (old style) | 546026 |

Gaskets



Sets:

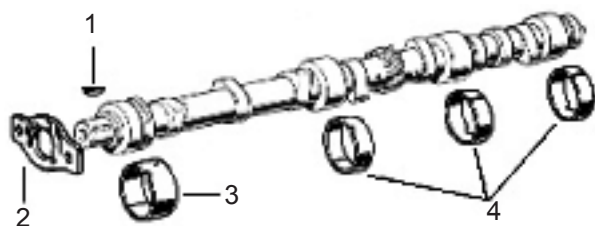
- | | |
|--|---------|
| Complete engine set, 2.25L gas
(Copper head gasket, no crank seals) | STC1556 |
| Head set, 2.25L gas | STC1567 |
| Head set, 2.25L diesel | RTC3336 |

Individual: (We stock all 2.25L gaskets, Call with needs)

- | | |
|--|---------|
| Head gasket, composite, gas | ERC6380 |
| Intake manifold gasket (head to intake)
(IIA style can be used on III- inquire) | 274171 |
| Manifold gasket (bet. intake & exhaust) | 247824 |
| Timing chain cover | 538039 |
| Water inlet on timing chain cover | 538038 |
| Oil fill tube, open system | 247555 |
| Oil fill tube, closed system | ERR1475 |
| Oil filter adaptor housing | ERR3607 |
| Gasket, oil pan | 546841G |

If you do not see the gasket you want contact us.

Camshaft and Bearings



Camshaft:

- | | |
|---|---------|
| 2.5L stock grind (Fits 2.25 engine)
(better performance on and off road than 2.25 cam) | ETC7128 |
|---|---------|

- | | |
|--------------------------------------|----------|
| 1 Woodruff key, timing gear | 230313 |
| 2 Thrust plate | ERC1561 |
| 3 Bearing, cam, 1st (AE premachined) | 90519054 |
| 4 Bearings, cam, 3 (AE premachined) | 90519055 |